

START OF MIRETECH

If anyone can do it, then we would not even start.
We would like to open a new era of formwork in Korea with the manufacturing and research technologies accumulated in the Form Tie System. Challenging what no one else can do is Miretech's spirit.

**MIRETECH creates technology
that does not exist
in the world**

MIRETECH, ENGINE OF GROWTH

People ask what is Miretech's engine of growth. Most people assume the Miretech's innovative technology is the engine of growth. Miretech's constantly strives for and researches new innovative technology. But, that is not the key to growth. The reason Miretech exists today is because it is a 'trusted' name. Since Miretech's inception in 1999, we have spent that time in building that name. In order to convey what we do are human skills, we strive to constantly meet, communicate, and empathize. The 'trusted' name that we earned is the core competency of today's Miretech.

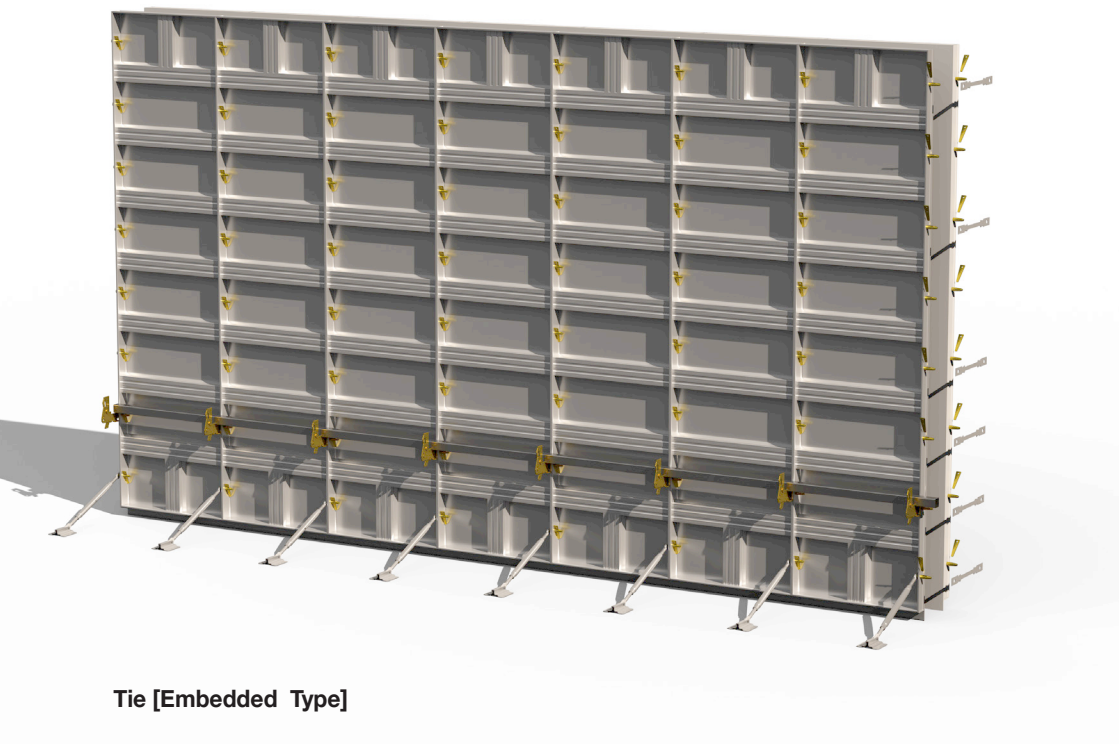
FROM INNOVATION TO CREATION

Miretech's way forward is to go beyond innovating what already exists and to create what does not exist. Korea is built utilizing Miretech's technology. Now, Miretech's technology is going global. We will achieve the future that we dreamt.



△ Busan Haeundae Marine City_ Applying MIRETECH Formwork / Form Tie System(2006~2016)

AL-Forming Part



Tie [Reusable Type]

Re-cone tie -Over 300 wall thickness
-Situation difficult to use reusable tie

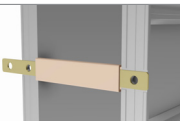
Reusable Tie [3Hole]
Tensile Load / 3,800kgf



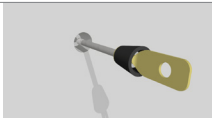
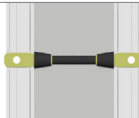
Reusable Tie [2Hole]
Tensile Load / 3,800kgf



Tie Sleeve



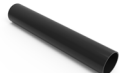
Re-Cone Tie (Reusable Type)
Tensile Load / 3,800kgf



Re-Cone
Size : 1/2"



PVC Pipe
Size : 18 mm



Sepa Bolt
Tensile Load 1/2" 4500kgf



Pins & Wedges

Stub Pin



Standard Pin



AL-Filler Pin



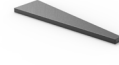
Beam Pin



AL-Wedge



Straight Wedge



Curved Wedge



Euro Form Wedge



Tie [Embedded Type]

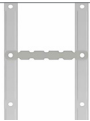
AL-Flat Tie [33]
Tensile Load / 3,000 kgf



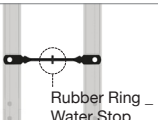
AL-Flat Tie [37]
Tensile Load / 3,000 kgf



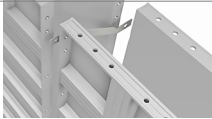
Round End Tie [Nominal Tie / Full Tie]
Tensile Load / 3,620kgf / 8,000lbs
Size 6", 8", 10", 12"



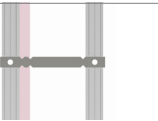
Rod Tie
Tensile Load / 2,800 kgf



Z- Tie
Tensile Load / 3,000 kgf



Break Back Tie
Tensile Load / 3,000 kgf



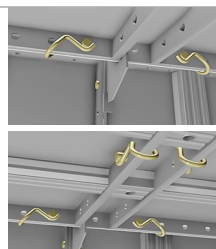
Clip

easy construction
pins and wedges loss prevention
noise prevention

Auto Pin
Slide type



Form Clip [Deck Panel]



Waler Bracket

AL-Bracket
[Wedge type]

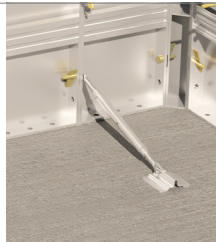


AL-Bracket
[Bolt Type]



Turnbuckle Bracket

AL-Turnbuckle Bracket



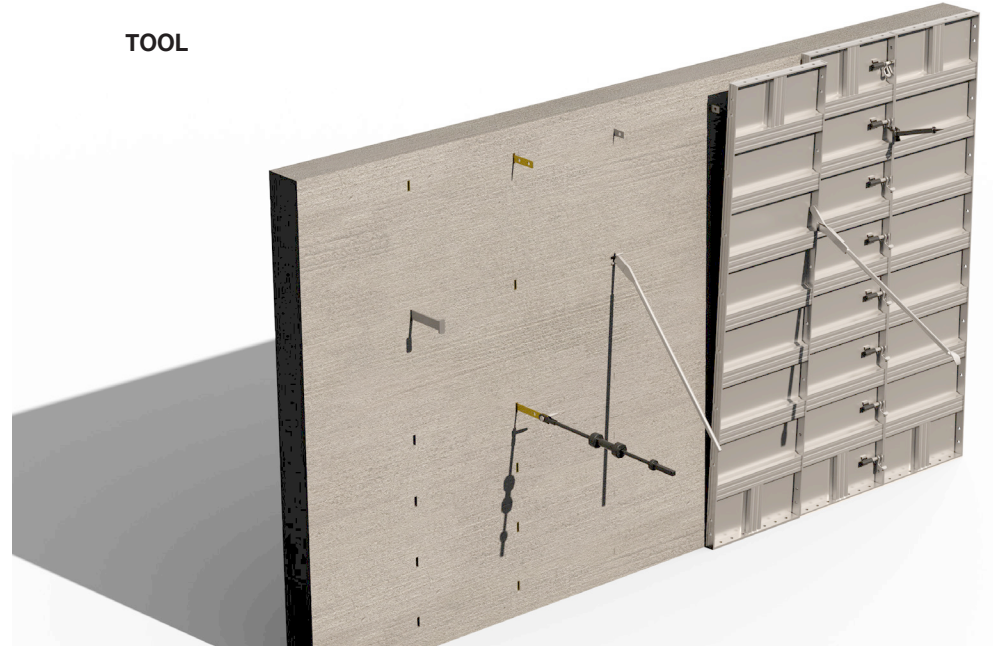
Conner Turnbuckle
Bracket



Wall Brace



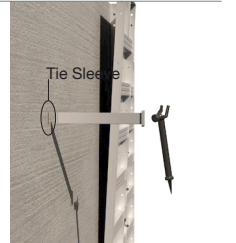
TOOL



Tie Breaker Bar



Ejector Bar



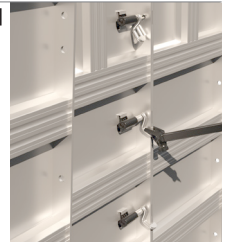
Form Puller



Tie Puller



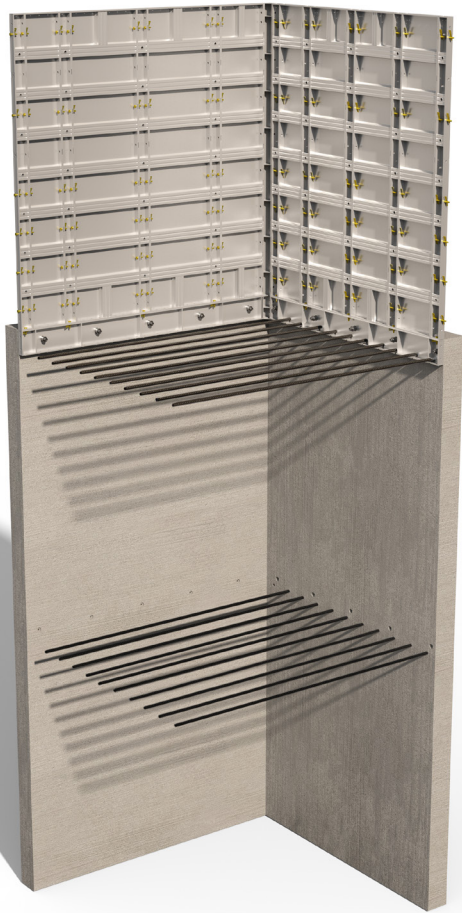
Stripper [Alignment Tool]



Form Scraper



Kicker Anchor System



Kicker Anchor [Assembly]



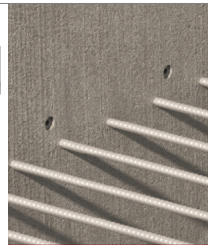
Kicker Nut



Kicker Bolt



Using tools
Spanner ①

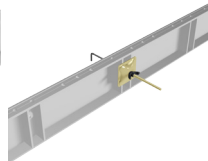
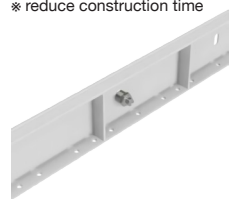


Compare kicker anchor form with traditional method

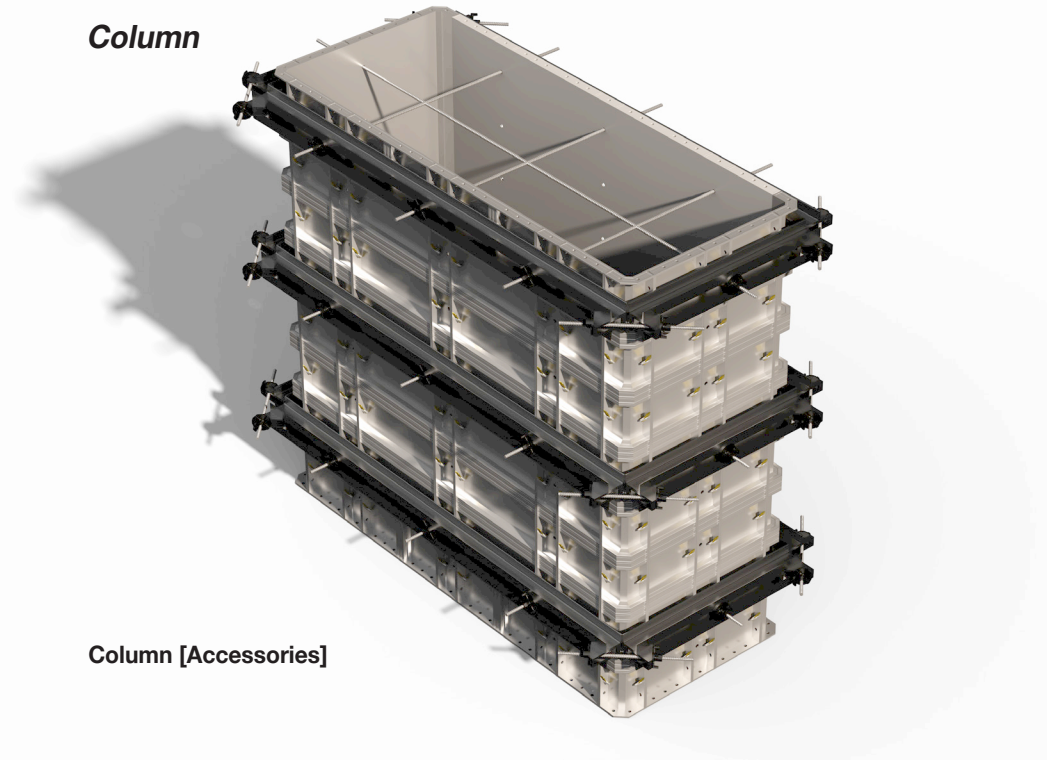
Kicker Anchor Form construction method
reusable Anchor bolt

Traditional construction method
embedded Anchor bolt

- ※ reduce materials and labor cost
- ※ reduce construction time

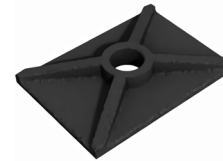


Column



Column [Accessories]

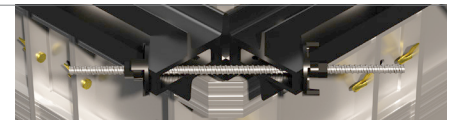
Dywidag Washer
Size 130*90*5T



Waler Band
customized



Dywidag Bolt
Tensile Load / 14,700kgf



Dywidag Nut
Size 17mm, 22mm

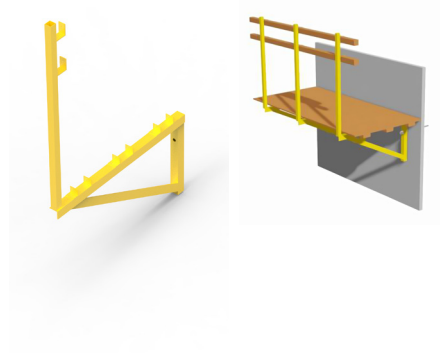


Flange Nut
Size 17mm, 22mm

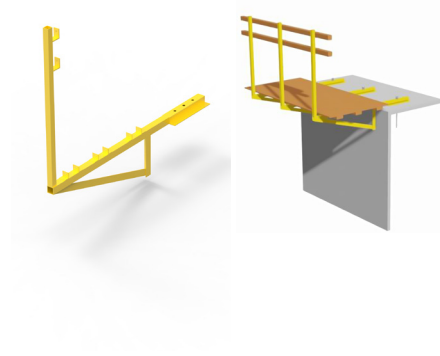


Scaffold Bracket

Wall Bracket



Slab Bracket



Bracket Fixing Bolt [Assembly]



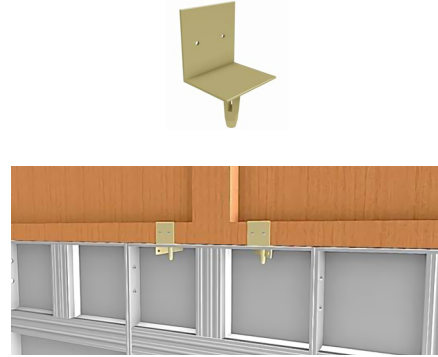
Form Spacer [General Type]



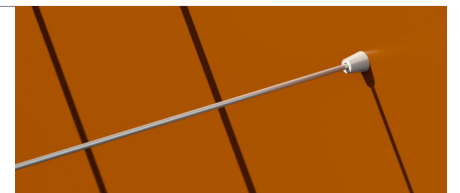
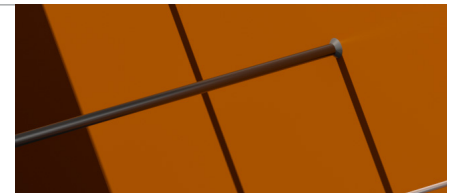
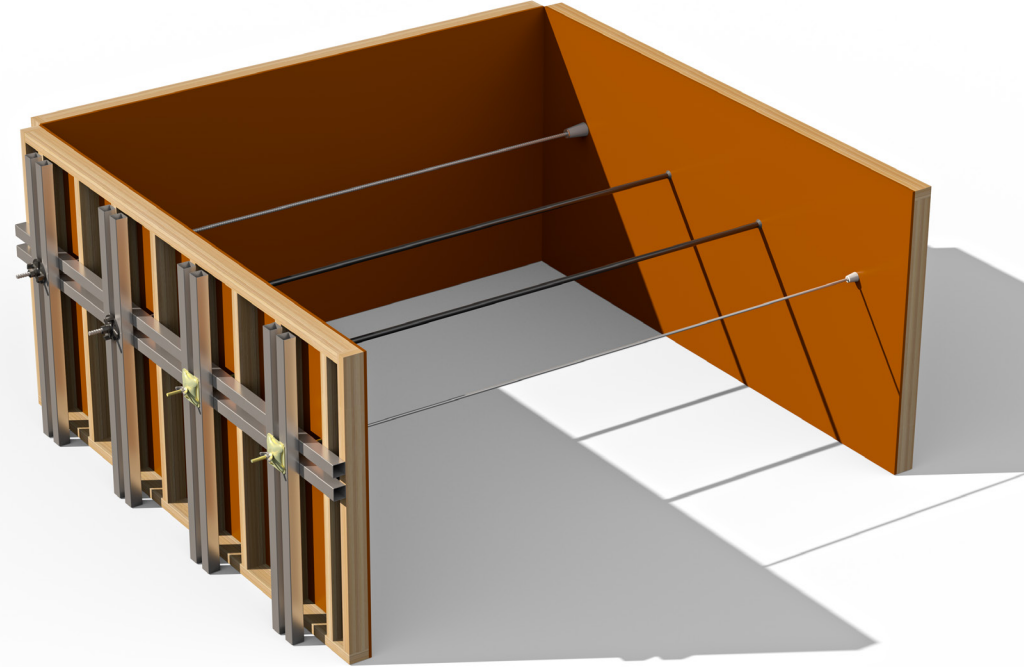
Form Spacer [L-Type]



Extension Bracket

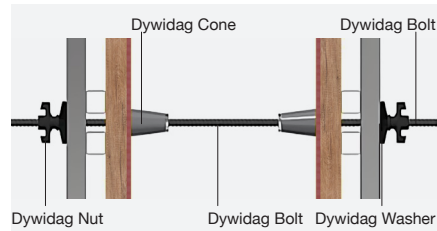


Wood-Forming Part



Dywidag Form Tie System [Embedded Type]

Component _one dywidag bolt, two dywidag cone, two dywidag nut and washer(or two flange nut)

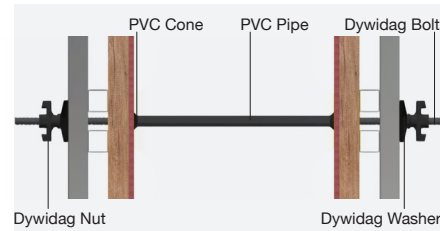


Dywidag Bolt
Tensile Load 14700kgf
Size 17mm, 22mm



[Reusable Type]

Component _a dywidag bolt, two dywidag nut and washer(or two flange nut, a PVC Pipe, two PVC Cone



Dywidag Bolt
Tensile Load 14700kgf
Size 17mm, 22mm



Flange Nut
Size 17mm, 22mm



Dywidag Nut
Size 17mm, 22mm



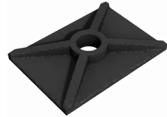
Flange Nut
Size 17mm, 22mm



Dywidag Nut
Size 17mm, 22mm



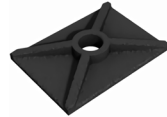
Dywidag Washer
Size 17mm, 22mm



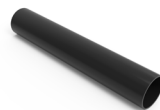
Dywidag Cone
Size 17mm, 22mm



Dywidag Washer
Size 17mm, 22mm



PVC Pipe
Size 18mm, 22mm

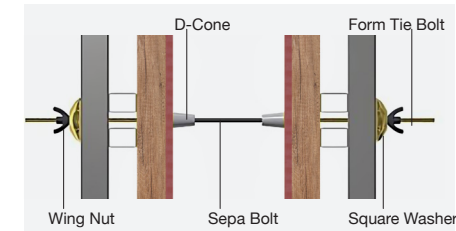


PVC Cone
Size 18mm, 22mm



Form Tie Bolt System [Embedded Type]

Component _one sepa bolt, two form tie bolts, tow D cons, two square washers, two wind nuts



Sepa Bolt
Tensile Load 1/2" 4,500kgf, 5/8" 7,000kgf



Form Tie Bolt
Tensile Load 1/2" 3,600kgf, 5/8" 7,000kgf



Square Washer
Size 1/2", 5/8"



Wing Nut
Size 1/2", 5/8"

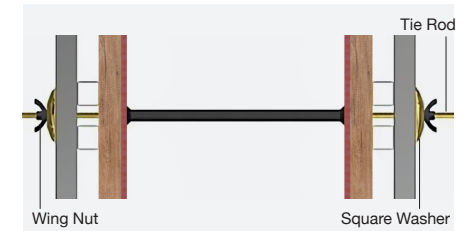


D Cone
Size 12"40mm, 16"60mm



[Reusable Type]

Component _one tie rod, two square washers, two wing nuts, one PVC pipe, tow PVC cones



Tie Rod
Tensile Load 1/2" 4,500kgf, 5/8" 7,000kgf



Square Washer
Size 1/2", 5/8"



Wing Nut
Size 1/2", 5/8"



PVC Pipe
Size 18mm, 22mm



PVC Cone
Size 18mm, 22mm

